

TAHVISH

AIR CONDITIONING SYSTEMS





TAHVISH

AIR CONDITIONING SYSTEMS





Index

Company Profile	3
Tahviah Co. Main Departments	4
Products	16
-Fan Coil	16
-Chiller.....	24
-Condensing Unit.....	27
-Condenser Unit.....	29
-Air Handling Unit & Air Washer.....	31
-Cooling Tower.....	34
-Mini Chiller.....	35
-Split Air Conditioning System.....	37
-Ducted Split Unit.....	40
-Precision Air Condition Unit.....	41
-Electrical Enclosure Air Condition.....	42
-Unit Heaters.....	43
-Dual purpose evaporative cooling.....	44
-Sound Attenuator.....	45
-Vehicle Air Conditioning Systems.....	46
-Subway & Train Air Conditioning Systems.....	47
-Ice Cream Maker.....	48
-Isothermal Humidifiers.....	49
-Types of Coils (water, DX, Electrical, Steam).....	50
-Shell & Tube Evaporator (R407C).....	53
-Shell & Tube Evaporator (R410a).....	54
-Shell & Tube Evaporator (R407C).....	55
-Replaceable Filter dryer.....	56
-Electromotors 17 W - 450 W.....	57
-Low Pressure Forward Centrifugal Fan - Double Inlet 500 CFM to 60000 CFM.....	58
-High Pressure Backward Centrifugal Fan - Double Inlet 1000 CFM to 70000 CFM.....	59
-Plug Fan 500 CFM to 13500 CFM.....	60
-Low Pressure Forward Centrifugal Fan - Single Inlet 200 CFM to 12000 CFM.....	61
-High Pressure Backward Centrifugal Fan- Single Inlet 500 CFM to 23000 CFM.....	62
-AXIAL FANS.....	63
The Countries to where the products of Tahviah Company have been exported	64

Company Profile

Tahviah Company was established in 1964 and successfully paved its way in the air conditioning industry by utilizing technology of Air temp & Trane companies. This company later managed to receive manufacturing permit under the license of two U.S. companies of Chrysler and Air temp.

During 80's, Tahviah started to design and manufacture a new generation of air conditioning system relying on its rich technical knowledge and great capability of its manpower. As one of the largest private companies in designing and manufacturing air conditioning equipment, it has managed to become a pioneer of this industry in Iran.

In 2013, we began the second half-century of our glorious presence in air conditioning industry and in addition to the previous products, Tahviah initiated manufacturing of new products and by the end of the first half of 2016, we managed to manufacture and supply mini-chillers, various types of split air condition systems (floor standing, wall mounted and ducted), electrical enclosure air condition, precision air condition, ice cream makers and air conditioning systems for automotive and rail industry.

Tahviah. In 2016 being a member of International Institute of Refrigeration (IIR). Today, TahviahCo., as one of the largest manufacturers of air conditioning systems and as a top brand in Iran, is one of the reliable sources of supplying the strategic and important industries of the country such as oil, gas, petrochemical, refining, power plants, telecommunications, steel making, train & automobiles, healthcare, Development and other industries of the country.



Tahviah Co. Main Departments

Research and Development

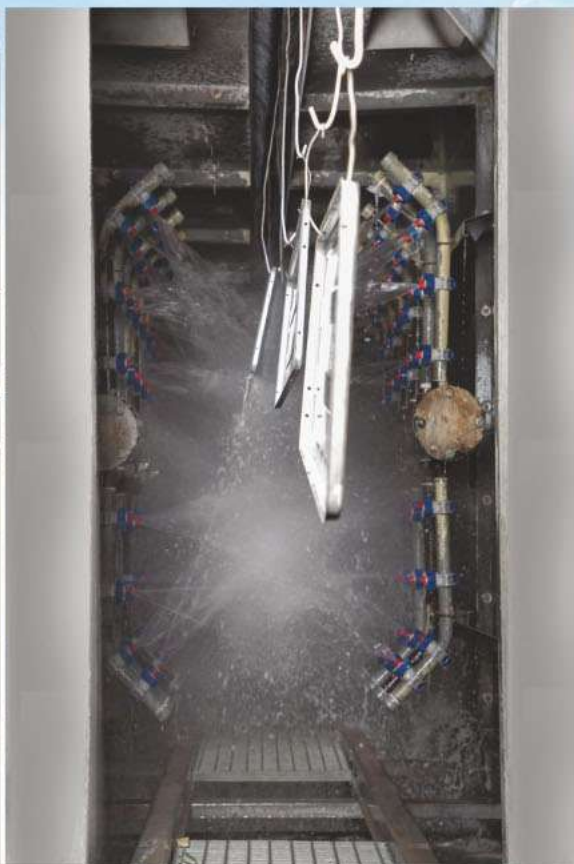
According to market needs, at R&D department a new product is innovated by industry's leading experts and modern equipment and techniques.



Manufacturing

Ability of Tahviah manufacturing is developed to the modern manufacturing facilities set up to international standards. The Tahviah manufactory has about 22000 square meter area that is included plastic injection part, coil production, cutting and press part, painting and assembling workshops.







Quality Assurance

Tahviah Company controls the quality of its products by using its well-equipped laboratories in field of power, electronic, mechanic and performance test according to ASHRAE standards, unfit products are taken out from production line and fit products are marketed.



Additionally, in order to further enhance the quality of its products and to comply with the global terms, we pay special attention to the following two important issues:

1. Establishment of a quality management system: Tahviah received ISO9001 certification for all of its products in 1998.

2-Training: Tahviah considers training as one of the tenets for its growth and development. Based on such belief, Tahviah develops and organizes programs for training at all levels for its employees, sales representatives and authorized repair agents throughout the year.





SZUTEST

SZUTEST Uygunluk Değerlendirme A.Ş., İstanbul, Türkiye
Oranlarısı Kuruluş 2195

DIRECTIVE 2014/34/EU
CERTIFICATE OF RECEIPT OF TECHNICAL FILE

(1) According to Article 13.1 b (i), Directive 2014/34/EU, we confirm the receipt of documentation to retain it.

(2) Receipt Number: **SZU 21 TF 011**

(3) Technical File Number: **T-ATEX-ENF-01**

(4) Date: 27.12.2021

(5) Equipment or Protective System: **Single Side Centrifugal Exhaust fan with Forward Impeller**
Model No: 9-3, 10-4, 10-5, 12-4, 12-5, 15-4, 15-5, 18-4, 18-5, 20-7, 20-10, 22-7, 22-11, 25-10, 25-12, 30-10, 30-14

(6) Manufacturer/Applicant: **Tahviah Company**

(7) Manufacturer/Applicant Address: **No.1, Tahviah Building, corner of kohe noor st., Motehary Ave Tehran, Iran**

(8) SZUTEST, notified body that no. 2195, in accordance with the Council Directive 2014/34/EU of 26 February 2014, here with acknowledges receipt, from the Manufacturer, of the technical documents (Technical File).

(9) This acknowledgement is an evidence about fulfillment of manufacturer duties concerning communication the dossier of technical documentation to notified body in accordance with clause Article 13.1 b (i) of Directive 2014/34/EU ATEX. Further requirements of the Directive apply to the manufacturing process and supply of this equipment or protective system.

(10) SZUTEST holds the Technical File for at least ten years from the date of the last manufactured apparatus. In case of lack of a written acknowledgement from the manufacturer about the intention of maintaining the Technical File deposit, SZUTEST will hold the TECHNICAL FILE in its archives for 10 years, starting from the date this receipt is confirmed.

(11) This receipt can be reproduced only entirely and with no change.

(12) Reference standards: **EN 80079-36:2016, EN 80079-37:2016, EN 14068:2017, EN 1127-1:2019**

(13) Marking of the equipment or protective system according to manufacturer's declaration.

(14) The manufacturer is authorized to use CE mark but without NB number.

 **II 2G Ex h IIB-H2 T4 Gb**



Rukya BALKAN
Deputy General Manager

Issue Date: 27.12.2021
Revision Date: 01
Validity Date: 27.12.2031

SZUTEST UYGUNLUK DEĞERLENDİRME A.Ş.
Tahviah Binası, Oranlarısı Kuruluş 2195, İstanbul, Türkiye
Szutest.com.tr

SZUTEST

SZUTEST Uygunluk Değerlendirme A.Ş., İstanbul, Türkiye
Oranlarısı Kuruluş 2195

DIRECTIVE 2014/34/EU
CERTIFICATE OF RECEIPT OF TECHNICAL FILE

(1) According to Article 13.1 b (i), Directive 2014/34/EU, we confirm the receipt of documentation to retain it.

(2) Receipt Number: **SZU 21 TF 012**

(3) Technical File Number: **T-ATEX-ENF-01**

(4) Date: 27.12.2021

(5) Equipment or Protective System: **Single Side Centrifugal Exhaust fan with backward impeller**
Model No: 250, 280, 315, 400, 450, 500, 550, 630, 710, 800, 880, 1000

(6) Manufacturer/Applicant: **Tahviah Company**

(7) Manufacturer/Applicant Address: **No.1, Tahviah Building, corner of kohe noor st., Motehary Ave Tehran, Iran**

(8) SZUTEST, notified body that no. 2195, in accordance with the Council Directive 2014/34/EU of 26 February 2014, here with acknowledges receipt, from the Manufacturer, of the technical documents (Technical File).

(9) This acknowledgement is an evidence about fulfillment of manufacturer duties concerning communication the dossier of technical documentation to notified body in accordance with clause Article 13.1 b (i) of Directive 2014/34/EU ATEX. Further requirements of the Directive apply to the manufacturing process and supply of this equipment or protective system.

(10) SZUTEST holds the Technical File for at least ten years from the date of the last manufactured apparatus. In case of lack of a written acknowledgement from the manufacturer about the intention of maintaining the Technical File deposit, SZUTEST will hold the TECHNICAL FILE in its archives for 10 years, starting from the date this receipt is confirmed.

(11) This receipt can be reproduced only entirely and with no change.

(12) Reference standards: **EN 80079-36:2016, EN 80079-37:2016, EN 14068:2017, EN 1127-1:2019**

(13) Marking of the equipment or protective system according to manufacturer's declaration.

(14) The manufacturer is authorized to use CE mark but without NB number.

 **II 2G Ex h IIB-H2 T4 Gb**



Rukya BALKAN
Deputy General Manager

Issue Date: 27.12.2021
Revision Date: 01
Validity Date: 27.12.2031

SZUTEST UYGUNLUK DEĞERLENDİRME A.Ş.
Tahviah Binası, Oranlarısı Kuruluş 2195, İstanbul, Türkiye
Szutest.com.tr

SZUTEST 

CERTIFICATE OF COMPLIANCE

The test reports and declaration of the following product have been checked and found in compliance with the Parliament and Council Directive 2014/34/EU of 26 February 2014 on the harmonization of the laws of Member States relating to electromagnetic compatibility.

Test reports ve uyumluk beyanları kontrol edilmiş, belirlenen Ortamın Arıza Birliği Teknik Komitesi tarafından 26 Şubat 2014 tarihinde yürürlükte 2014/34/EU Direktivine uyumlu olduğu tespit edilmiştir.

Certificate Number: **OSE-21-081108**

Applicant: **TAHVIEH Co.**
Büyürlü Sahibi: **No.1, Tahviah Building, Corner of kohe noor st., Motehary Ave, Tehran, Iran**

Manufacturer: **TAHVIEH Co.**
Üretici: **Sorjani Street, 6th Hehmet Street, Alborz Industrial City, Gazuvin Province, Iran**

Trade Mark: 

Product: **Concealed Ceiling Fan Coil Unit**

Type: **HR, HS**
Model: **(size: 200, 300, 400, 600, 800, 1000, 1200)**

Standard: **EN 50074-1:2006, EN 61000-3-2:2014, EN 61000-3-3:2014**

Base of attestation: **File of technical documentation, test report**
Oray Dayanagı: **Ref. No. L1-60005-T2
Teknik Dokümantasyon, numara
Test Raporu L1-60005-T2**

Validity: **16.06.2021-15.06.2024**
Geçerlilik:

This Certificate of compliance is issued on a voluntary basis according to Council Directive 2014/34/EU of 26 February 2014 on the harmonization of the laws of Member States relating to electromagnetic compatibility. The test reports are reviewed and attested with presentation of the dossier. The notified body is not responsible for the conformity of the product with the essential requirements of the Directive. The manufacturer does not change the conformity of the product with the essential requirements of the Directive. The manufacturer does not change the conformity of the product with the essential requirements of the Directive. The manufacturer does not change the conformity of the product with the essential requirements of the Directive.



SZUTEST UYGUNLUK DEĞERLENDİRME A.Ş.
Tahviah Binası, Oranlarısı Kuruluş 2195, İstanbul, Türkiye
Szutest.com.tr

SZUTEST 

CERTIFICATE OF COMPLIANCE

The test reports and declaration of the following product have been checked and found in compliance with the Parliament and Council Directive 2014/34/EU of 26 February 2014 on the harmonization of the laws of Member States relating to electromagnetic compatibility.

Test reports ve uyumluk beyanları kontrol edilmiş, belirlenen Ortamın Arıza Birliği Teknik Komitesi tarafından 26 Şubat 2014 tarihinde yürürlükte 2014/34/EU Direktivine uyumlu olduğu tespit edilmiştir.

Certificate Number: **OSE-21-081108**

Applicant: **TAHVIEH Co.**
Büyürlü Sahibi: **No.1, Tahviah Building, Corner of kohe noor st., Motehary Ave, Tehran, Iran**

Manufacturer: **TAHVIEH Co.**
Üretici: **Sorjani Street, 6th Hehmet Street, Alborz Industrial City, Gazuvin Province, Iran**

Trade Mark: 

Product: **Concealed Ceiling Fan Coil Unit**

Type: **HR, HS**
Model: **(size: 200, 300, 400, 600, 800, 1000, 1200)**

Standard: **EN 50074-1:2006, EN 61000-3-2:2014, EN 61000-3-3:2014**

Base of attestation: **File of technical documentation, test report**
Oray Dayanagı: **Ref. No. L1-60005-T2
Teknik Dokümantasyon, numara
Test Raporu L1-60005-T2**

Validity: **16.06.2021-15.06.2024**
Geçerlilik:

This Certificate of compliance is issued on a voluntary basis according to Council Directive 2014/34/EU of 26 February 2014 on the harmonization of the laws of Member States relating to electromagnetic compatibility. The test reports are reviewed and attested with presentation of the dossier. The notified body is not responsible for the conformity of the product with the essential requirements of the Directive. The manufacturer does not change the conformity of the product with the essential requirements of the Directive. The manufacturer does not change the conformity of the product with the essential requirements of the Directive. The manufacturer does not change the conformity of the product with the essential requirements of the Directive.



SZUTEST UYGUNLUK DEĞERLENDİRME A.Ş.
Tahviah Binası, Oranlarısı Kuruluş 2195, İstanbul, Türkiye
Szutest.com.tr



SZUTEST **CE**

CERTIFICATE OF COMPLIANCE

The test reports and declaration of the following product have been checked and found in compliance with the Parliament and Council Electromagnetic Compatibility Directive 2014/53/EU of 26 February 2014 on the harmonization of the laws of Member States relating to electromagnetic compatibility.

Test raporu ve uygunkluk beyanı incelenmiş, belirlenen şartlara bağlı Teknik Komisyonu tarafından 26 Şubat 2014 tarihinde yayımlanan 2014/53/EU Elektromanyetik uyumluluk ile ilgili yasanın gereğini karşıladığı saptanmıştır.

Certificate Number: OSE-21-0611/04
Sertifika Numarası:

Applicant: TAHVIEH Co.
Beyanuru Sahibi: No.1, Tahviah Building, Corner of kohe noor st, Motahari Ave, Tehran, Iran

Manufacturer: TAHVIEH Co.
Üretici: Jorjani Street, 6th Hehmat Street, Alborz Industrial City, Gavvin Province, Iran

Trade Mark: 
Ticari Marka:

Product: 4-Way Cassette Ceiling Fan Coil Unit
Ürün:

Type: CFA, CFN, CHA, CHN, SD, SM, SW, ST
Model: (size: 200, 300, 400, 500, 600, 800, 1000, 1200)

Standard: EN 5914-1:2006, EN 61000-3-3:2014, EN 61000-3-2:2014
Standart:

Base of attestation: File of technical documentation, test report Ref. No. L1-60007-T2
Onay Dayanağı: Teknik Dokümantasyon, numarası Test Raporu L1-60007-T2

Validity: 16.06.2021-15.06.2024
Gevamlık:

* This Certificate of compliance is issued on a voluntary basis according to Council Directive 2014/53/EU of 26 February 2014 on the harmonization of the laws of Member States relating to electromagnetic compatibility. The referenced test report(s) is/are reviewed and checked with presumption of compliance with the essential requirements listed in EU Directive(s) above. This attestation does not oblige the manufacturer to issue the declaration of conformity.

* Bu uygunkluk sertifikası 26 Şubat 2014 tarihinde yayımlanan 2014/53/EU Elektromanyetik uyumluluk ile ilgili yasanın gereğini karşıladığı saptanmıştır. Yalnızca belirlenen şartlara bağlı olarak teknik komisyon tarafından 26 Şubat 2014 tarihinde yayımlanan 2014/53/EU Elektromanyetik uyumluluk ile ilgili yasanın gereğini karşıladığı saptanmıştır. Bu onay belgesinin yayımlanması beyan edilmemesi zorunluluğu ortadan kaldırmaz. Referans test rapor ve teknik dokümantasyon belgeleri AT Direktifi'nin şartlarına uygundur. Referans test rapor ve teknik dokümantasyon belgeleri AT Direktifi'nin şartlarına uygundur.

SZUTEST

SZUTEST UYGUNLUK DEĞERLENDİRME A.Ş.
Tahviah Binası, No.1, Tahviah Binası, Köşesi Kohe Noor St. / Motahari Ave, Tahran / İran
szutest.com.tr

SZUTEST **CE**

CERTIFICATE OF COMPLIANCE

The technical file and test reports of the following product have been checked and found in compliance with the Parliament and Council Directive 2004/42/EC of 17 May 2006 on the approximation of the laws of the Member States relating to machinery.

Teknik dosya ve test raporları incelenmiş, belirlenen şartlara bağlı Teknik Komisyonu tarafından 17 Mayıs 2006 tarihinde yayımlanan 2004/42/AT Makina Emsiyak Yönetmeliğine uygunluğu saptanmıştır.

Certificate Number: OSE-21-0611/06
Sertifika Numarası:

Applicant: TAHVIEH Co.
Beyanuru Sahibi: No.1, Tahviah Building, Corner of kohe noor st, Motahari Ave, Tehran, Iran

Manufacturer: TAHVIEH Co.
Üretici: Jorjani Street, 6th Hehmat Street, Alborz Industrial City, Gavvin Province, Iran

Trade Mark: 
Ticari Marka:

Product: 4-Way Cassette Ceiling Fan Coil Unit
Ürün:

Type: CFA, CFN, CHA, CHN, SD, SM, SW, ST
Model: (size: 200, 300, 400, 500, 600, 800, 1000, 1200)

Standard: EN 60204-1:2018, EN ISO 12100:2010
Standart:

Base of attestation: File of technical documentation, test report Ref. No. L1-60007-T10
Onay Dayanağı: Teknik Dokümantasyon, numarası Test Raporu L1-60007-T10

Validity: 16.06.2021-15.06.2024
Gevamlık:

* This Certificate of compliance is issued on a voluntary basis according to Council Directive 2004/42/EC of 17 May 2006 on the approximation of the laws of the Member States relating to machinery. The referenced test report(s) is/are reviewed and checked with presumption of compliance with the essential requirements listed in EU Directive(s) above. This attestation does not oblige the manufacturer to issue the declaration of conformity.

* Bu uygunkluk sertifikası 17 Mayıs 2006 tarihinde yayımlanan 2004/42/AT Makina Emsiyak Yönetmeliğine göre sağlanmıştır. Yalnızca belirlenen şartlara bağlı olarak teknik komisyon tarafından 17 Mayıs 2006 tarihinde yayımlanan 2004/42/AT Makina Emsiyak Yönetmeliğine göre sağlanmıştır. Bu onay belgesinin yayımlanması beyan edilmemesi zorunluluğu ortadan kaldırmaz. Referans test rapor ve teknik dokümantasyon belgeleri AT Direktifi'nin şartlarına uygundur. Referans test rapor ve teknik dokümantasyon belgeleri AT Direktifi'nin şartlarına uygundur.

SZUTEST

SZUTEST UYGUNLUK DEĞERLENDİRME A.Ş.
Tahviah Binası, No.1, Tahviah Binası, Köşesi Kohe Noor St. / Motahari Ave, Tahran / İran
szutest.com.tr

SZUTEST **CE**

CERTIFICATE OF COMPLIANCE

The test reports and declaration of the following product have been checked and found in compliance with the Parliament and Council Electromagnetic Compatibility Directive 2014/53/EU of 26 February 2014 on the harmonization of the laws of Member States relating to electromagnetic compatibility.

Test raporu ve uygunkluk beyanı incelenmiş, belirlenen şartlara bağlı Teknik Komisyonu tarafından 26 Şubat 2014 tarihinde yayımlanan 2014/53/EU Elektromanyetik uyumluluk ile ilgili yasanın gereğini karşıladığı saptanmıştır.

Certificate Number: OSE-21-0611/01
Sertifika Numarası:

Applicant: TAHVIEH Co.
Beyanuru Sahibi: No.1, Tahviah Building, Corner of kohe noor st, Motahari Ave, Tehran, Iran Advertising Co.Ltd

Manufacturer: TAHVIEH Co.
Üretici: Jorjani Street, 6th Hehmat Street, Alborz Industrial City, Gavvin Province, Iran

Trade Mark: 
Ticari Marka:

Product: 1-Way Cassette Ceiling Fan Coil Unit
Ürün:

Type: CO (size: 200, 300, 400, 600)
Model:

Standard: EN 5914-1:2006, EN 61000-3-2:2014, EN 61000-3-3
Standart:

Base of attestation: File of technical documentation, test report Ref. No. L1-60002-T2
Onay Dayanağı: Teknik Dokümantasyon, numarası Test Raporu L1-60002-T2

Validity: 16.06.2021-15.06.2024
Gevamlık:

* This Certificate of compliance is issued on a voluntary basis according to Council Directive 2014/53/EU of 26 February 2014 on the harmonization of the laws of Member States relating to electromagnetic compatibility. The referenced test report(s) is/are reviewed and checked with presumption of compliance with the essential requirements listed in EU Directive(s) above. This attestation does not oblige the manufacturer to issue the declaration of conformity.

* Bu uygunkluk sertifikası 26 Şubat 2014 tarihinde yayımlanan 2014/53/EU Elektromanyetik uyumluluk ile ilgili yasanın gereğini karşıladığı saptanmıştır. Yalnızca belirlenen şartlara bağlı olarak teknik komisyon tarafından 26 Şubat 2014 tarihinde yayımlanan 2014/53/EU Elektromanyetik uyumluluk ile ilgili yasanın gereğini karşıladığı saptanmıştır. Bu onay belgesinin yayımlanması beyan edilmemesi zorunluluğu ortadan kaldırmaz. Referans test rapor ve teknik dokümantasyon belgeleri AT Direktifi'nin şartlarına uygundur. Referans test rapor ve teknik dokümantasyon belgeleri AT Direktifi'nin şartlarına uygundur.

SZUTEST

SZUTEST UYGUNLUK DEĞERLENDİRME A.Ş.
Tahviah Binası, No.1, Tahviah Binası, Köşesi Kohe Noor St. / Motahari Ave, Tahran / İran
szutest.com.tr

SZUTEST **CE**

CERTIFICATE OF COMPLIANCE

The technical file and test reports of the following product have been checked and found in compliance with the Parliament and Council Directive 2004/42/EC of 17 May 2006 on the approximation of the laws of the Member States relating to machinery.

Teknik dosya ve test raporları incelenmiş, belirlenen şartlara bağlı Teknik Komisyonu tarafından 17 Mayıs 2006 tarihinde yayımlanan 2004/42/AT Makina Emsiyak Yönetmeliğine uygunluğu saptanmıştır.

Certificate Number: OSE-21-0611/03
Sertifika Numarası:

Applicant: TAHVIEH Co.
Beyanuru Sahibi: No.1, Tahviah Building, Corner of kohe noor st, Motahari Ave, Tehran, Iran

Manufacturer: TAHVIEH Co.
Üretici: Jorjani Street, 6th Hehmat Street, Alborz Industrial City, Gavvin Province, Iran

Trade Mark: 
Ticari Marka:

Product: 1-Way Cassette Ceiling Fan Coil Unit
Ürün:

Type: CO (size: 200, 300, 400, 600)
Model:

Standard: EN 60204-1:2018, EN ISO 12100:2010
Standart:

Base of attestation: File of technical documentation, test report Ref. No. L1-60002-T10
Onay Dayanağı: Teknik Dokümantasyon, numarası Test Raporu L1-60002-T10

Validity: 16.06.2021-15.06.2024
Gevamlık:

* This Certificate of compliance is issued on a voluntary basis according to Council Directive 2004/42/EC of 17 May 2006 on the approximation of the laws of the Member States relating to machinery. The referenced test report(s) is/are reviewed and checked with presumption of compliance with the essential requirements listed in EU Directive(s) above. This attestation does not oblige the manufacturer to issue the declaration of conformity.

* Bu uygunkluk sertifikası 17 Mayıs 2006 tarihinde yayımlanan 2004/42/AT Makina Emsiyak Yönetmeliğine göre sağlanmıştır. Yalnızca belirlenen şartlara bağlı olarak teknik komisyon tarafından 17 Mayıs 2006 tarihinde yayımlanan 2004/42/AT Makina Emsiyak Yönetmeliğine göre sağlanmıştır. Bu onay belgesinin yayımlanması beyan edilmemesi zorunluluğu ortadan kaldırmaz. Referans test rapor ve teknik dokümantasyon belgeleri AT Direktifi'nin şartlarına uygundur. Referans test rapor ve teknik dokümantasyon belgeleri AT Direktifi'nin şartlarına uygundur.

SZUTEST

SZUTEST UYGUNLUK DEĞERLENDİRME A.Ş.
Tahviah Binası, No.1, Tahviah Binası, Köşesi Kohe Noor St. / Motahari Ave, Tahran / İran
szutest.com.tr

Aftersales Services and Customer Relationship Management

Tahviah believes that customer retention is more important than attracting new customers and the key to customer loyalty is his satisfaction. In this regard, special attention has been paid to aftersales services and customer relationship management. After sales services consist of two main parts:

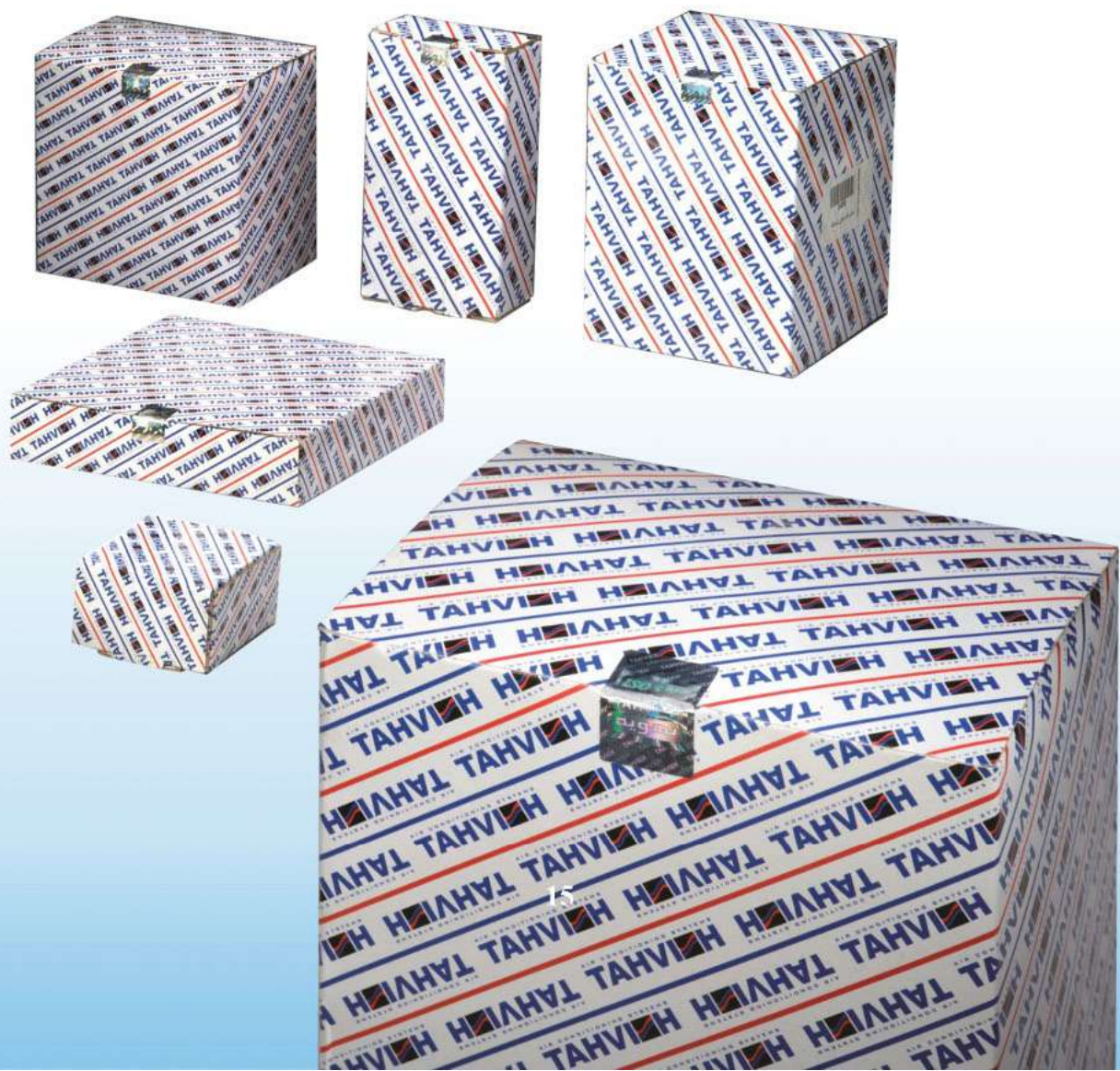
Service part

All services including installation, commissioning, maintenance and repair are provided by trained teams who are certified by the company.

Spare Parts

In order to provide convenience for customers, Tahviah Company commits itself to provide all spare parts required by customers within the shortest time.

It should be noted that spare Parts manufactured in tahviah, is passed strict quality control process and in order to assist the customers to distinguish the origin of the spare parts, each package comes with a hologram.



Products

Tahviah company product a wide range of air conditioning systems which are used in all residential, industrial, office, healthcare places and automotive and train industry including: Chillers , mini chillers, types of fan coils (floor standing, ceiling, duct and cassette type), cooling tower, condenser units, air handling units (Usaul and Hygenic), air washers, packaged air conditioning units, split air conditioning systems (wall mounted, floor standing and duct split units), precision air conditioning unit, electrical enclosure air condition, exhaust fan, jet fan, Industrial dehumidifier, Intelligent cooling system, automotive and train air conditioning system



General specification of Tahviah fan coils

Body is high quality galvanized sheets which are joined to each other with screw.

Electro Motor that is used in fan coils is single shaft or double shaft with three speeds (low, medium and high) with thermal Class B and IP 20. They have thermal protection, if the device is overheated; the fan is turned off and switched on after cooling.

Fans are centrifuge and made of ABS plastic. They are balanced statically and dynamically and have minimum noise level.

Insulation the EPS insulation is used to prevent loss of energy and reduce the noise. The thickness of elastomeric insulation is 4 mm in fan coil models HR, SV, SB and 10 mm thickness of EPS insulation in cassette types.

Coil is made of copper tube 3/8" with aluminum fin and brass collector. the coil is 3 row with 14 fpi fin, it shall be rinsed with a special degreasing solution after manufacture and hydro tested in 190psig pressure

Filter in according to current world standards is made of propylene (PP). Its efficiency is more than aluminum filters and less pressure drop. It is washable and has long life.

Pan is insulated on inside or outside surface to prevent condensation with 4mm thickness insulation.



**Floor Mounted Keriveh with base (model: SV)
and without base (model: SB)**

- Air flow rates are 200 cfm (340 m³/hr), 300 cfm (510 m³/hr), 400 cfm (680 m³/hr), 600 cfm (1020 m³/hr) and 800 cfm (1360 m³/h)
- So beautifull disign
- Low noise level
- It could be installed on floor, wall and ceiling
- Proper dimensions with Lowest occupied space
- With two coils-heating and cooling coil, 4 Pipes units (optional)
- Suction air from under device
- Beautiful grills are made of ABS
- External body is electro galvanized sheet with electrostatic coating
- Three-speed motor, single phase.

To know the technical specifications and more information about this product, scan the below code or visit the our website at www.Tahviah.com



NEW Floor Mounted



To know the technical specifications and more information about this product, scan the below code or visit the our website at www.Tahviah.com





4 way Setare Cassette Type , 2 pipes and 4 pipes

- Air flow rates are 200 cfm (340 m³/hr), 300 cfm (510 m³/hr), 400 cfm (680 m³/hr), 500 cfm (850 m³/hr), 600 cfm (1020 m³/hr), 800 cfm (1360 m³/h), 1000 cfm (1700 m³/h), 1200 cfm (2040 m³/h)
- Luxury and decorative appearance witch are made of ABS
- Low noise level
- With two coils-heating and cooling coil, 4 Pipes units (optional)
- fresh air intake
- It has a vent for branching out the air
- Internal pan is insulated with foam poly styrene class B2
- External condensed water pan
- Proper dimensions for installing in concealed ceiling
- Body and Drain pan's construction is heavy gage galvanized steel
- Complete insulation inside and outside the body with high compression (insulation inside the body with EPS insulation and anti-condensation insulation for outside the body
- Three-speed motor, single phase.
- Motors are provided with thermal protection against overload and coil over temperature
- Use of vibration isolator under the motor base for decreasing vibration and noise
- Circle Coil for uniformity outlet air , more capacity and less air pressure loss
- Washable filter with easy installation and replacement without to open the channel



To know the technical specifications and more information about this product, scan the below code or visit the our website at www.Tahviah.com



4-way Oshan Cassette Type with line diffuser, 2 pipes and 4 pipes

- Air flow rates are 200 cfm (340 m³/hr), 300 cfm (510 m³/hr), 400 cfm (680 m³/hr), 500 cfm (850 m³/hr), 600 cfm (1020 m³/hr), 800 cfm (1360 m³/h), 1000 cfm (1700 m³/h), 1200 cfm (2040 m³/h)
- Luxury and decorative appearance witch are made of ABS
- Easy installation and services
- Temperature sensor
- With two coils-heating and cooling coil, 4 Pipes units (optional)
- Air vent valve with easy function
- Centrifuge drain pump
- Remote control and setting the blades
- Three-speed motor, single phase.
- External condensed water pan
- Washable filter with easy installation and replacement without to open the channel



To know the technical specifications and more information about this product, scan the below code or visit the our website at www.Tahvieh.com



one way Oshen Cassette Type

- Air flow rates are 300 cfm (510 m³/hr), 400 cfm (680 m³/hr), 600 cfm (1020 m³/hr),
- Luxury and decorative appearance witch are made of ABS
- Easy installation and services
- Air vent valve with easy function
- Centrifuge drain pump
- Check valve for avoiding return drain water to pan
- Remote control and setting the blades
- It has four operating modes: Automatic, cooling, heating and fan
- Proper dimensions for installing in concealed ceiling with 22 cm height
- Three-speed motor, single phase.
- Abillity connected to BMS with RS485 protocol
- Washable filter with easy installation and replacement without to open the channel



To know the technical specifications and more information about this product, scan the below code or visit the our website at www.Tahviah.com



Concealed Ceiling Fan Coil (HR)

- Air flow rates are 200 cfm (340 m³/hr), 300 cfm (510 m³/hr), 400 cfm (680 m³/hr), 600 cfm (1020 m³/hr), 800 cfm (1360 m³/h), 1000 cfm (1700 m³/h), 1200 cfm (2040 m³/h)
- Proper dimensions for installing in concealed ceiling with low height
- With two coils-heating and cooling coil, 4 Pipes units (optional)
- The ability to use electric heating coil (optional)
- Air vent valve with easy function
- Body and Drain pan,s construction is heavy gage galvanized steel.
- It has two fresh air intake
- Suction air in two position; down position and rear position
- Easy access to fan and motor for periodic services
- Three-speed motor, single phase
- Motors are provided with thermal protection against overload and coil over temperature
- High cooling capacity with 3 rows coil
- Washable filter with easy installation and replacement



To know the technical specifications and more information about this product, scan the below code or visit the our website at www.Tahviah.com



Ducted Fan Coil (AR)

- Air flow rates are 600 cfm (1020 m³/hr), 800 cfm (1360 m³/h), 1000 cfm (1700 m³/h), 1200 cfm (2040 m³/h), 1400 cfm (2380 m³/h), 1600 cfm (2720 m³/h), 1800 cfm (3060 m³/h), 2000 cfm (3400 m³/hr)
- High cooling capacity with 3,4,6 rows coil
- With two coils-heating and cooling coil, 4 Pipes units (optional)
- Ability to use electric heating coil (optional)
- Air vent valve with easy function
- Ability to install fresh air intake (optional)
- Body and Drain pan's construction is heavy gage galvanized steel
- Easy access to fan and motor for periodic services
- Three-speed motor, single phase.
- Motors are provided with thermal protection against overload and coil over temperature



To know the technical specifications and more information about this product, scan the below code or visit the our website at www.Tahviah.com



Slim Ducted Fan Coil (ARN)

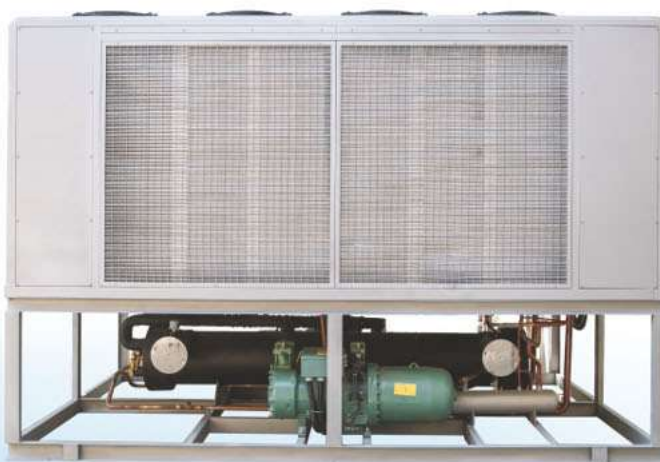
- Air flow rates are 600 cfm (1020 m³/hr), 800 cfm (1360 m³/h), 1000 cfm (1700 m³/h), 1200 cfm (2040 m³/h), 1400 cfm (2380 m³/h), 1600 cfm (2720 m³/h), 1800 cfm (3060 m³/h), 2000 cfm (3400 m³/hr), 2300 cfm (3910 m³/hr)
- Metal blowers for increasing air flow capacity
- Ability to use electric heating coil (optional)
- Air vent valve with easy function
- Ability to install fresh air intake (Optional)
- Propper static pressure to supply air
- Easy access to fan and motor for periodic services
- Three-speed motor, single phase.
- Motors are provided with thermal protection against overload and coil over temperatur
- Washable filter with easy installation and replacement without to open the channel



To know the technical specifications and more information about this product, scan the below code or visit the our website at www.Tahviah.com



To know the technical specifications and more information about this product, scan the below code or visit the our website at www.Tahviah.com



Packaged Air Cooled Screw Chiller



Modular Packaged Air Cooled Screw Chiller



To know the technical specifications and more information about this product, scan the below code or visit the our website at www.Tahviah.com



Water Cooled Screw Chiller



To know the technical specifications and more information about this product, scan the below code or visit the our website at www.Tahviah.com



Modular Water Cooled Screw Chiller

Water cooled and air cooled chillers are designed and manufactured with precision and high reliability according to international standards and working conditions. Expert engineers design with the best and updating engineering soft wares for air conditioning systems and the best Production Machinery. Tahviah Chillers are as follows:

- Range of capacity is from 17 to 360 nominal tons
- The compressors are Semi-Hermetic Compact Screw, Semi-Hermetic reciprocating and scroll types

- One circuit, two or more identical refrigerant circuits as modular
- They have PLC or Mini-PLC Controller , so, they need the least constant care
- All the valves and control equipment is supplied from the best brand.
- All the electronic equipment that are exposed to moisture have proper IP
- Shell & Tube Evaporator, Shell & Tube Condenser for water cooled chiller according to TEMA, ASME and ASTM standards and Coil Type condenser for air cooled chillers with inner rooved tube and high Efficiency
- Air cooled chiller is work in ambient temperature range 15 to 55 Â°C.
- In special conditions such as the water below zero, ambient temperature below 15Â°C and below zero, the special water cooled and air cooled chillers are designed and manufactured.
- All the chillers are tested in the company's equipped laboratory. The water cooled chillers are connected to cooling tower and tested.

To know the technical specifications and more information about this product, scan the below code or visit the our website at www.Tahviah.com





Air Cooled Condensing Unit

Tahviah condensing units are manufactured in nominal cooling capacities from 10 to 180 tons and are designed for various refrigerants such as R22, R134a and R407c.

Structure & Chassis

Aluminum profiles and hot dip galvanized sheets is used for structure and body. To reach more strength, body and structure coated by 3 layer epoxy dye. Chassis made of strong steel to dividing the weight of condensing unit with lifting lug for shipping. Compressors are installed on special isolator for reducing sound and vibrate.

Compressors are the most reputable European manufacturers such as Copeland & Blitzer (Germany) and Danfoss (France).

Condenser Coils

The condenser coils are constructed with seamless copper tubes arranged in a staggered row pattern and mechanically expanded into aluminum or copper (optional) fins to ensure optimum heat exchange capability. For protecting the condenser in corrosive environment such as coastlines and etc. and extending equipment life anti-corrosion coated option is provided. The Leakage test is done for all condenser coils at 450 psi.

Inlet guards are available to protect the condenser coils against impact and damage. They are fabricated from heavy gauge steel mesh configuration.

Condenser Fans

Aluminum guarded axial airfoil blade fans with directed driven is used for condensing units. The airfoil fan blades are caused to reduce noise and energy consumption. Motor velocity is 900 rpm and motor protection is IP54 with thermal class F.

Electrical and controller System

Electrical panel have all safety device for Condenser. Only needs cabling to electrical panel. There is a display which shows the status of equipment, faults, temperature, suction pressure, discharge pressure and oil pressure for each cycle

The system is equipped with a controller in order to control the process and load and unloading the capacity of unit. Also there is pressure control switch for each cycle.

The unit is connected to the Modbus network –BMS as optional

Cold Weather Control

An automatic mild ambient control shall be factory installed to provide satisfactory operation at ambient temperature below 15°C. It consists of temperature & pressure-actuated switches that shut off a number of condenser fans when the condensing pressure drops to a predetermined setting. As the pressure rises, the control automatically restarts the fans to maintain an optimum condenser pressure range.



To know the technical specifications and more information about this product, scan the below code or visit the our website at www.Tahviah.com



Modular Air Cooled Scroll Condensing Unit

To know the technical specifications and more information about this product, scan the below code or visit the our website at www.Tahviah.com



Modular Air Cooled Screw Condensing Unit

To know the technical specifications and more information about this product, scan the below code or visit the our website at www.Tahviah.com



Condenser Unit



Air Cooled Condenser Unit

Tahviah condenser units are designed for various refrigerants such as R22, R134a and R407c. The air cooled condenser unit is produced as modular in various cooling capacities. It is capable operating in a wide range of temperatures in different condition with 1 cycle or 2 cycles.

The units are assembled, wiring and tested in factory.

Condenser Coils

The condenser coils are manufactured in two types:

The condenser coils are constructed with seamless copper tubes and aluminum fins. Another type is micro-channel coil.

Condenser Fans & Motor

Aluminum guarded axial airfoil blade fans with direct driven is used for air cooled condenser units. The airfoil fan blades are caused to reduce noise and energy consumption. Condenser fan also is protected against over load and over current by phase control system. Fan variable speed controller in 3 steps for capacity control is in optional according to project requirement

Structure & Chassis

Aluminum profiles and hot dip galvanized sheets is used for structure and body. To reach more strength, body and structure coated by epoxy dye. Chassis made of strong steel to dividing the weight of condensing unit with lifting lug for shipping.



Air Cooled Micro Channel Condenser Unit



To know the technical specifications and more information about this product, scan the below code or visit the our website at www.Tahviah.com



Air Handling Unit & Air Washer



Air handling Unit & Air Washer

Job Requirement Precisely Satisfied

A complete range of sizes and types enable the designer to select a TAHVIEH air handler to closely match individual requirements. There are fifteen basic sizes, each of which is offered with four coil face areas. Matched components enable a unit to be quickly assembled for its specific duty.

Long time of Life

Quality components, heavy gage galvanized steel panels, insulation panels, aluminum precision dampers and easily lubricated fan bearings are a few of the features that contribute to the long life of TAHVIEH air handlers. Even more important feature is a sophisticated engineering approach that emphasizes well-balanced design.

Construction is heavy wherever required but, on the other hand, when quality would not be compromised, bulk and weight have been reduced.

Quiet Operation

Three types of fan wheels have been engineered into all unit sizes. Slow speed Forward curved wheels, non-overloading Backward curved, and Airfoil wheels are available for the designer's choice. In addition, each unit is built in with acoustic panels upon request. With this flexibility, individual selection can be tailored for quiet and efficient performance.

Serviceability

Quick internal access is insured by means of strategically located access doors. In addition, the construction system permits removal of individual sections for complete access, if required. In order to increase the life of bearings and shafts, motors are internally mounted on all units.

Hygienic Air Handling Features:

-Casing is constructed of airtight double skin Stainless steel panels with 2 inches polyurethane insulation, air tight with EPDM gasket, thermal break profile and sight glass according to VDI-6022 and VDI-3803 and EN-13053 standards.

Use of special handles and hinges

-High efficiency centrifugal plug fan with low noise level.

-Coil section pan and filter rail are made of stainless steel.

-Filters with high efficiency (G2 to H14 dust spot) and carbon active filter are available to use.

-Hygienic air handling is equipped with DDC type controller (IP65 is optional)

-Use the intelligent system to change the motor speed based on the set temperature and return air temperature

-It is connected to the Modbus network –BMS (Optional)

-F & G control system (Optional)

-Ability to optimize energy consumption by at least 25% due to inverter use.

-Display the ambient temperature and room temperature.

-Display faults and record fault occurrences

-Control differential pressure of filters

-Stainless steel Jacket steam grid humidifier (optional)

-Ability to adjust the motor speed manually, the percentage of opening dampers and display it

-Ability use in full fresh air and full return air



Hygienic Air handling Unit

To know the technical specifications and more information about this product, scan the below code or visit the our website at www.Tahviah.com





Air Washer

Tahviah air washers are two types:

- Type 1, AW1: class 6, Single bank (Max. 75% of Saturation Performance at 500 fpm and 30 PSIG)
- Type 2, AW2: class 8, two banks (maximum 95% of saturation efficiency at 500 fpm and 30 PSIG)

Features:

- Header of water inlet, piping and nozzles material are poly propylene.
- Plastic mist eliminator and inlet louver are included in chamber.
- Full cast iron water sump pumps are placed inside the air washer chamber, making it compact and easy to install.
- The unit is equipped with floater and a water level control switch; prevent the burning out of sump pumps.
- Casing is constructed airtight double skin galvanized sheet panels with 1 or 2 inches polyurethane insulation, powder electro static painting and sight glass. Stainless steel casing (optional)
- Use special thermal profiles (Optional)
- Use of proper access door.
- Use of special handles and hinges.
- Air washer pan is made of hot dip galvanized sheet and it is painted with epoxy coating.
- Fan is centrifugal type with static and dynamic balance with shaft and bearing grease nipples.
- Three phase 380-3-50 electric motor 1400rpm with IP 54 protection and thermal class F (with adjustable position by setting screw).



Water is one of our most precious resources and consumption has reached unprecedented levels. Cooling towers recycle cooling water, so it can be used over and over again. Recycling reduces water consumption by 95% when compared to out dated "once-through" systems, thus, reducing water and sewage costs.

Product Introduce

VX Cooling Towers extend the proven advantages of V-Line with a broader choice of sizes to closely match the capacity, space, and application requirements of virtually any project. All units are designed to ensure quiet operation, dependable Performance, long life, and ease of maintenance. The compactness of the V-pan and the static pressure capability of the centrifugal fans make VX Cooling Towers the logical choice for indoor installations of restricted outdoor enclosures. Single-fan-side design and a variety of width and length combinations provide alternative configurations to fit the required capacity in the available space.

Because the recessed centrifugal fans are inherently quiet, VX Cooling Towers are preferred whenever low sound levels are desired. Sound attenuation accessories manufactured by TAHVIEH are available for projects requiring very quiet operation.

A choice of materials of construction including two wet deck surface options and TAHVIEH engineered accessories mean the VX Cooling Tower can meet virtually every application and installation need including complete fireproof construction for PVC wet deck surface and reliable year round operation.

Product life is extended and maintenance costs are minimized by the blow-through design which places all moving parts in the dry entering air stream. VX Cooling Towers are constructed of heavy gage, galvanized steel with a proven corrosion protection finish significantly better than galvanizing alone.

Ease of maintenance is provided by the self-cleaning V-pan and large orifice spray nozzles. All rotating parts are located at the base of the unit for easy access and maintenance. All units are factory-assembled for uniform quality of construction and performance with major components having been designed, tested, and manufactured by TAHVIEH.



Mini Chiller

Cooling Mini Chiller



To know the technical specifications and more information about this product, scan the below code or visit the our website at www.Tahviah.com



Cooling & Heating Mini Chiller (Heat Pump)

The apartment cooling mini-chillers of Tahviah Company are designed at capacities of 3.1 to 21.6 of actual refrigeration and cooling-heating mini chillers (heat pump) are designed in capacities of 3.1 to 21.6 tons of actual refrigeration for different climatic conditions. This product is suitable for residential buildings, official buildings and commercial buildings. Its advantages are minimum installation occupied space, removing some of the engine room requirements and Independence in energy consumption.

Advantages

- Hydraulic system equipment: Tahviah mini chillers equipped with water pump, expansion tank, relief valve, flow switch, high pressure and low pressure switch and pressure gage.
- Easy maintenance: cause of automatic control system and proper function, the need for seasonal adjustments is minimized by specialists.
- Quick and easy installation
- Quiet and silent operation: the use of Scroll compressor and axial fan with low revolution and Sound insulation in mini chiller panels have reduce noise and vibration.
- Electro motor with insulation class "F" and 3 phases,
- Braze Plate Stainless Steel (BPHE) Evaporator with high quality, efficiency and proper dimension.
- Intelligent control system: utilizing intelligent control board and color display, the user can easily set the device in different situations.



To know the technical specifications and more information about this product, scan the below code or visit the our website at www.Tahviah.com



Split Air Conditioning System



This system is two types: Tropical constant revolution and Inverter type for non-tropical climate condition

- Cooling Capacity is from 9000 to 30000 btu/hr for various climate conditions (Tropical & Non-Tropical)
- Refrigerant is R410a
- Turbo Technology in cooling and heating
- Timer 24 hour and Sleep Mode
- Automatic defrost system
- Equipped with a system for reducing the humidity of space
- Fault self-diagnosis and display function
- Cold space protection technology
- Inner grooved tube coils
- Anti-corrosion fins
- Automatic restart system
- Equipped with child lock



Wall mounted Split Unit

To know the technical specifications and more information about this product, scan the below code or visit the our website at www.Tahviah.com



Cassette Split Unit



To know the technical specifications and more information about this product, scan the below code or visit the our website at www.Tahviah.com





Floor Standing Split Unit

Floor standing split unit consists of two main components; an outdoor compressor/condenser and an indoor unit(s). The outdoor unit is installed on outside of the room. The cooling capacity of Tahviah floor standing split units are 40000 and 50000 (btu/hr) and their power supply is 3ph. Due to the high air throw and cooling capacity, it is suitable for large halls and areas.

- Turbo Technology in cooling and heating
- Timer 24 hour and Sleep Mode
- Automatic defrost system
- Equipped with a system for reducing the humidity of space
- Fault self-diagnosis and display function
- Automatic restart system
- Washable Filter & Body
- Equipped with child lock

To know the technical specifications and more information about this product, scan the below code or visit the our website at www.Tahviah.com





Ducted Split Unit



Ducted air conditioners are common in the workplace, shopping centers and other large areas, but they are also increasingly common for the home. They involve a central location where the air is treated, then sent by fans through a system of ducts and into each room. Ducted air conditioners are great for keeping large areas at a uniform temperature.

Tahviah Concealed Ducted 'Split' systems consist of an outdoor unit and an indoor unit installed in the ceiling space. Air is distributed from the indoor unit by duct to one or more air vents. With convenient thermostat control, heating, cooling or auto settings are available at your fingertips. Cooling Capacity is from 24000 to 60000 btu/hr in various climates.

Ducted air conditioning system differs from a wall mounted or cassette split system in that the entire unit is concealed, usually in the roof space of your property or housed unobtrusively outside the property. The cooled air is then directed to multiple rooms or zones within the building via a system of concealed ducting. Another difference is in cold regions, The heat pump system can not provide the required heating, while duct split in Heating mode, it can be had water heating coil which is supply from heating package units. -under the fan and motor assemble.



To know the technical specifications and more information about this product, scan the below code or visit the our website at www.Tahviah.com





Precision Air Condition Unit

Precision air conditioning designed for critical applications where precise conditioning of air temperature and humidity is vital.

Precision air conditioning controls the ambient environment by providing constant temperature and humidity conditions to costly and sensitive sophisticated electronic equipment's throughout the year.

Precision Air condition Unit (PAC) is installed in computer room, server room and data centers. Computer equipment generates heat, and is sensitive to heat, humidity, and dust, but also the need for very high

resilience and failover requirements. Maintaining a stable temperature and humidity in 24 hours a day within tight tolerances is critical to IT system reliability.

The PAC is very diverse, but almost all of them are in the up-flow and down-flow. You can also transfer the air through the duct to the desired location.

- Cooling Capacity is from 2 to 6 ton
- Modern design, small dimension, high quality equipment and anti-corrosion body
- Control and precision of humidity and room temperature using advanced control system
- Special design for the high Sensible Heat Ratio (SHR>90%)
- Designed according to standard "ASHRAE TC9.9", "14511 EN", "0-1-019 300 ETS"
- Dehumidify mode, consist of humidifier and electrical heater
- Functionality in all seasons and different temperature conditions (-34°C to +50°C)
- Due to scroll compressor, slow speed blower and Acoustic-thermal insulation, the PAC has high efficiency and silent function.

Places ability used

- Computer Room, Server Room and Data Centers
- Telecom equipment Room, Network operators, ISP and CATV
- Laboratories and Test Room
- Television Transmitters

To know the technical specifications and more information about this product, scan the below code or visit the our website at www.Tahviah.com



Electrical Enclosure Air Condition

Enclosure air conditioners are installed on electrical panels or compartments with sensitive electronic equipment. Enclosure air conditioners are designed to maintain a set temperature inside the enclosure using a closed-loop method, ensuring a contaminant-free environment and protecting electrical/ electronic components from overheating.

Also it is used to protect the equipment that is damaged due to increased temperature from control and electronic components in server rooms. The equipment is: CPU, Microprocessor, Graphic Card, Hard Disk and Drives.

- Cooling Capacity is 1200,3000,5000,7000 Btu/hr
- Compressor with CE standard
- Fan with CE standard and thermal protection class B
- Control and Setting return air temperature
- Wall mounting and ceiling mounting ability
- Its body is galvanized sheet with electro static painting



To know the technical specifications and more information about this product, scan the below code or visit the our website at www.Tahviah.com



Unit Heaters



Tahviah Unit Heaters are commonly used for heating of high ceiling areas like manufacturing plants, public gathering halls and institutional, commercial and industrial application. With unit heaters you can fulfill your heating requirements with ease and comfort at low cost.

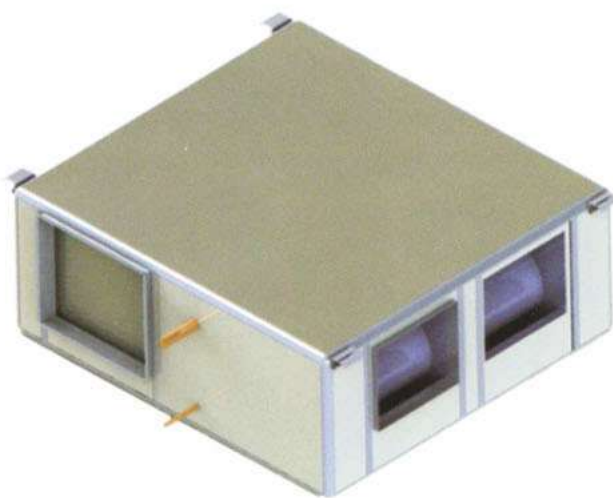
The unit heaters are equipped with fan, coil and dampers and have been designed to be used in enclosed spaces.

Features:

- Blow thru
- Aluminum extruded profiles skeleton
- The casing is made of hot dip galvanized sheet with rock 0.75" thk. wool insulation (optional) sandwiched between double skin panels inner skin is galvanized perforated sheet
- Electric coil is constructed of ceramic shielded heating element in copper tubes (5/8", 0.025" thk.) with aluminum extended fins (150±10µ thk.). All electric coils are provided with terminal box and over heat protection single stage thermostat.
- Fan is axial type with direct driven motor. The fans are statically and dynamically balanced.
- Dampers are made of galvanized steel sheets



Dual purpose evaporative cooling

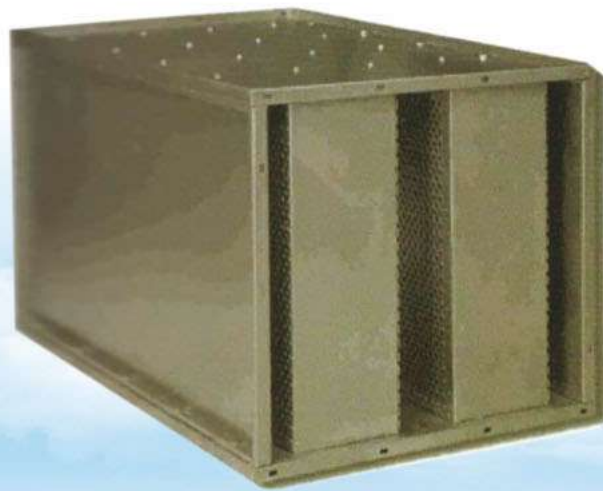


Evaporative cooling is one of the most common and advantageous methods that compared to other systems consume less energy in addition to its lower initial cost. Its application is in residential, commercial and industrial places.

Evaporative cooler is designed and manufactured in different models and air flow capacities of 2500, 4000 and 5000 (m³/hr) regarding the cooling and heating capacity demand and the substructure of residential and or administrative buildings.

Features:

- Cellulose pads for cooling and humidification and easy interchangeability.
- The unit is equipped with floater, overflow hose in emergency situation and drain valve for draining water in winter.
- Fresh air damper. It is closed in winter to avoid the ambient air entrance.
- Aluminum filter with three-layer washable mesh and easy replacement
- Low power consumption
- The casing is made of hot dip galvanized sheet with 1.5mm thk. polyurethane insulation between double skin panels and aluminum extruded profiles and corners. It is protected against corrosion with proper painting.
- The air tightness between frame and panels is secured with a continuous cellular rubber sealing strip.
- Stainless steel casing would be available for high corrosive conditions upon request.
- Ability to provide duct connection and flange
- Electrical coil and water heating coil is equipped in evaporative cooler. Its water is fed by heating water packaged. Electric coils are constructed of ceramic shielded heating element and 1500 W capacity. The electrical coil is used in emergency situation in case of package failure and water coil might be freeze if the air temperature decreases fewer than 3°C, so it is avoided to freeze the water coil by turn on automatically that is controlled by temperature sensor placed on coils fin.
- the water coil has air vent valve with easy function
- Easy maintenance of all equipment (pump, floater, coils, aluminum filter and cellulose pads).
- Fan is centrifuge forward type with high air flow, direct motor with 3 speed and low noise



Tahviah offers the design and engineering of sound attenuator product for reducing noise level of air handling unit to the rooms. The sound attenuators are manufactured in three major models covering a wide range of airflow in different pressure drops and noise cancellations. This allows the designer to select the right and also the most economical size of silencers. The casing of silencers is made of galvanized steel sheet with adequate thickness protected against corrosion with proper painting and flanged in both side

Stainless steel casing would be available for high corrosive conditions upon request.

Sound absorbing baffles contain fireproof mineral wool with proper density and specification protected with a non-woven layer and perforated galvanized steel sheet. The characteristic of absorbing media has designed for maximum acoustic performance and reduce the noise.

Features:

- Noise reduction is 8 dB to 38 dB in 250Hz octave band.
- The length of sound attenuators is from 20 to 100 inches.



Vehicle Air Conditioning Systems



To know the technical specifications and more information about this product, scan the below code or visit the our website at www.Tahviah.com

Subway & Train Air Conditioning Systems



To know the technical specifications and more information about this product, scan the below code or visit the our website at www.Tahviah.com



Features:

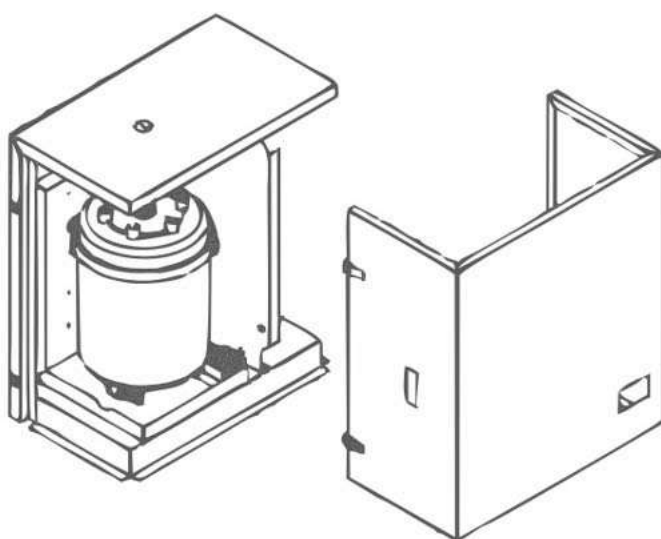
- Two outlet capacity 20L/Hr & 40L/Hr
- Power Supply 220V & 380V
- Cone ice cream in three color
- Two stainless Steel tank
- Front body and ceiling of the device material is stainless steel
- the sides of body material is galvanized sheet with a pre-painted pattern
- Two refrigerant storage for keeping the ice cream materials
- Cool down in the shortest time
- Gearbox with two outlet shafts



To know the technical specifications and more information about this product, scan the below code or visit the our website at www.Tahviah.com



Isothermal Humidifiers



Application

The places used of Humidifier are offices, clean rooms, data centers, industrials, museums, air conditioning equipment and precision air conditioning

This type of humidifier acts by particles immersed in city water with an electric current between them, generating heat and eventually steam. The amount of solutes in the water is checked and measured at the stage of water entering the tank

The amount of steam produced is directly related to the amount of electric current and the volume of water in the tank. The amount of current in the electrodes is measured alternately and the amount of steam produced is controlled. Due to the evaporation of water in the tank, the amount of solutes increases and increases the conductivity of the electric current. To prevent this, the water is drained by the solenoid valve and replaced with the fresh water.

Humidifiers are product in four different capacities according to the table below.

To know the technical specifications and more information about this product, scan the below code or visit the our website at www.Tahviah.com





Types of Coils (water, DX, Electrical, Steam)

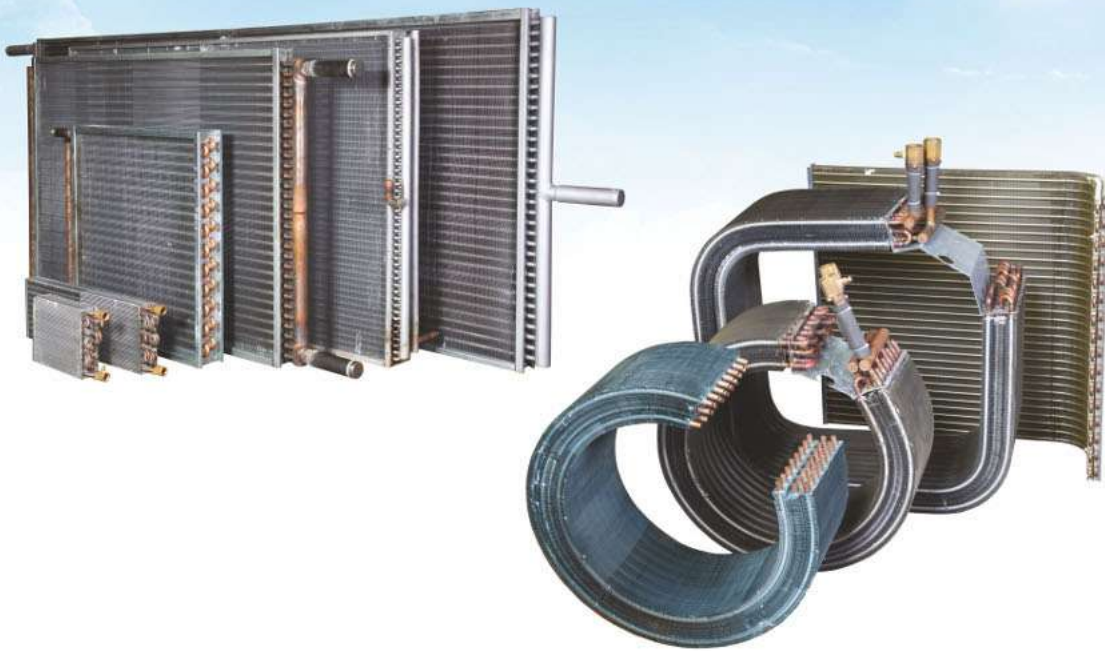


General

Tahviah Co. products types of coil such as: chilled/hot water coil, condenser coil evaporator /DX coil, steam coil and electrical coil based on AHRI standard Primary surface shall be made of seamless copper tubes. Secondary surface shall be made of continuous plate aluminum or copper fins. DX refrigerant distributors shall be factory selected and installed

Casing

Coil casings shall be constructed with flanged top, sides, and bottom rails of galvanized steel or stainless steel sheet designed to eliminate air bypass. Coils are arranged to slide in/out of the coil section on heavy tracks. Headers and return bends of all cooling and heating coils that are located inside the coil section are protected from possible damages. EXT coils have no casing and headers are exposed All face flanges contain holes to facilitate erection and field connection to matching components or ductwork. The copper tubes rest upon a continuous series of fin collars, where they are expanded into place to provide a permanent, lasting metal to metal bond. The resultant fin tube assembly tightly held in the heavy duty casing provides a compact and stable component for shipment and installation



Die formed corrugated plate fins

Efficient condensate removal is performed because water does not drop from row to row with the resultant possibility of being blown into the air stream. Instead it runs down the continuous plate fin to the bottom of the coil. Maximum heat transfer is obtained due to air turbulence produced by the corrugated fin surface

Tahviah provides a single source for all fin tube coils required on an air conditioning job regardless of size. A full line of coils includes "DX" type, for direct expansion; "HW" type for hot water heating; "CW" type for chilled water cooling; and "SD" type for steam-heating. Coils of any type with the same fin height and length may be used in series with direct matching interconnecting flanges. All coils are offered in a full range of sizes to permit precise and economic selection

Models include these options:

1-Fin spacing : 6 FPI, 8 FPI, 10 FPI, 12 FPI, 14 FPI and 18 FPI

2-Rows: 1, 2, 3, 4, 6 and 8

3- Finned Heights : 10" to 64"

4-Finned length : 10" to 161.4"

5-Anti-corrosion coating : Pre-coated fin such as gold and blue fin and coating after fabrication is also available upon request

Die formed corrugated plate fins

Efficient condensate removal is performed because water does not drop from row to row with the resultant possibility of being blown into the air stream. Instead it runs down the continuous plate fin to the bottom of the coil. Maximum heat transfer is obtained due to air turbulence produced by the corrugated fin surface

Tahviah provides a single source for all fin tube coils required on an air conditioning job regardless of size. A full line of coils includes "DX" type, for direct expansion; "HW" type for hot water heating; "CW" type for chilled water cooling; and "SD" type for steam-heating. Coils of any type with the same fin height and length may be used in series with direct matching interconnecting flanges. All coils are offered in a full range of sizes to permit precise and economic selection

Models include these options:

1-Fin spacing : 6 FPI, 8 FPI, 10 FPI, 12 FPI, 14 FPI and 18 FPI

2-Rows: 1, 2, 3, 4, 6 and 8

3- Finned Heights : 10" to 64"

4-Finned length : 10" to 161.4"

5-Anti-corrosion coating : Pre-coated fin such as gold and blue fin and coating after fabrication is also available upon request

Headers and Tubes

Tubes shall be mechanically expanded into die formed fin collars. Return bends shall be die formed to provide full internal area for fluid flow. Tubes shall be brazed into full hard seamless copper headers. Brazed copper headers and 5/8" seamless copper tubes joints are brazed at 1200°F for maximum strength. Copper tubes and copper headers produce all copper cores with no danger of leakage due to the electro galvanic corrosion of dissimilar metals. Return bends are die formed so as to provide a constant internal area for the water path. Standard copper tubes are 5/8 with 0.02" and 0.025" thickness with staggered pattern. 3/8" with 0.02" and 0.025" thickness and staggered pattern. 7 mm with 0.013" thickness is also available upon request

Important Features

Water Coils

Position of hydraulic connections can be left or right, relatively to the supply fan outlet and against air flow stream. Low , Normal and High headers are located inside the coil section casing and EXT coil header are located outside the coil section as following figures

All water coil ratings shall be certified in accordance with ARI Standard 410-64. TAHVIEH provides catalogues containing capacity and performance in a wide range of climate, features and dimensions with full selection information for this type of coil All coils shall be tested at 200 psig air pressure under water and shall be suitable for working pressures up to 150 psig and temperatures to 220°F and All coils shall be tested at 300 psig air pressure under water and shall be suitable for working pressures up to 200 psig and temperatures to 220°F

DX coils

Direct expansion coils are engineered and tested by TAHVIEH to assure maximum heat transfer efficiency through the full range of applications and operating conditions TAHVIEH coils are manufactured in a newly completed factory featuring the most modern machine facilities and finest quality materials All coils shall be tested at 500 psig nitrogen gas pressure, and shall be suitable for working pressures up to 300 psig

Electric coils

Electric coils are constructed of ceramic shielded heating elements in copper tubes with aluminum extended fin. All electric coils are provided with terminal box and over heat protection thermostat in opposite sides of the heating/Cooling connections

Steam Coils

All coils shall be tested at 500 psig air pressure under water and shall be suitable for working pressures up to 100 psig (338°F)

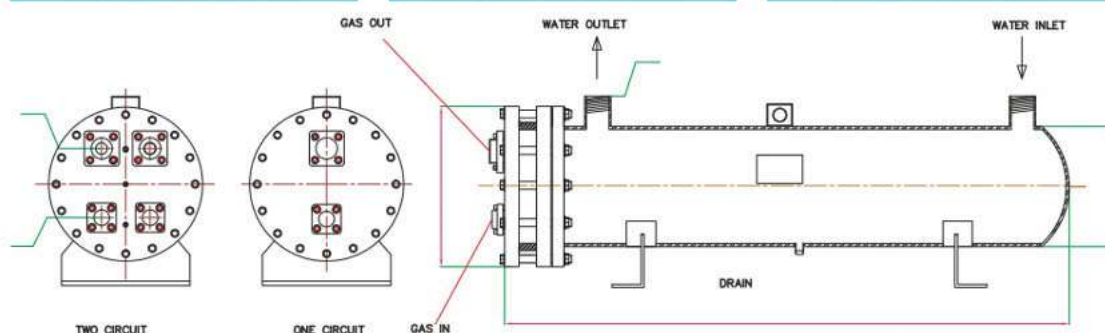
Shell & Tube Evaporator (R407C)

Shell & Tube Evaporator is designed with precise engineering software, and they are dry expansion type

10 TO 100 KW CAPACITIES
MORE EFFICIENCY

SMALL FOOT PRINT
MORE RELIABILITY

LIGHTER WEIGHT
FLOATING HEAD



2 PASS									
MODEL	CAPACITY (kw)	CIRCUIT	GPM	B1/B2(mm)	A(mm)	D (inch)	L(inch)	S(inch)	weight (kg)
ASEI1C10	10	1	7.5	230.157	710	1 1/2	7.8	1 1/8	59
ASEI1C15	15	1	11.5	230/157	950	1 1/2	7.8	1 1/8	68
ASEI1C20	20	1	15	280/206	720	1 1/2	7.8	1 1/8	81
ASEI1C30	30	1	23	280/206	925	1 1/2	7.8	1 1/8	93
ASEI1C40	40	1	30	280/206	1120	2 1/2	7.8	1 3/8	104
ASEI1C50	50	1	38	280/206	1220	2 1/2	7.8	1 3/8	110
ASEI1C60	60	1	46	280/206	1320	2 1/2	7.8	1 3/8	116
ASEI1C70	70	1	53	280/206	1370	3	7.8	1 3/8	118
ASEI1C80	80	1	61	280/206	1470	3	7.8	1 3/8	124
ASEI1C90	90	1	68	280/206	1570	3	7.8	1 3/8	130
ASEI1C100	100	1	76	280/206	1670	3	7.8	1 3/8	135
ASEI2C30	30	2	23	280/206	1070	1 1/2	7.8	1 1/8	95
ASEI2C40	40	2	30	280/206	1290	2 1/2	7.8	1 3/8	109
ASEI2C50	50	2	38	280/206	1380	2 1/2	7.8	1 3/8	120
ASEI2C60	60	2	46	280/206	1530	2 1/2	7.8	1 3/8	128
ASEI2C70	70	2	53	280/206	1630	3	7.8	1 3/8	134
ASEI2C80	80	2	61	280/206	1680	3	7.8	1 3/8	136
ASEI2C90	90	2	68	280/206	1780	3	7.8	1 3/8	142
ASEI2C100	100	2	76	280/206	1900	3	7.8	1 3/8	149

All above data and specifications are subject to change without prior notice

-Refrigerante R407C

-Water in/out Temp 7/12°C Subcool 5/56 °C

-Evaporating Temp 3°C Super Heat 6/11° C

-Condensing Temp 45° C Fouling Factor 0.00002 m2k/w

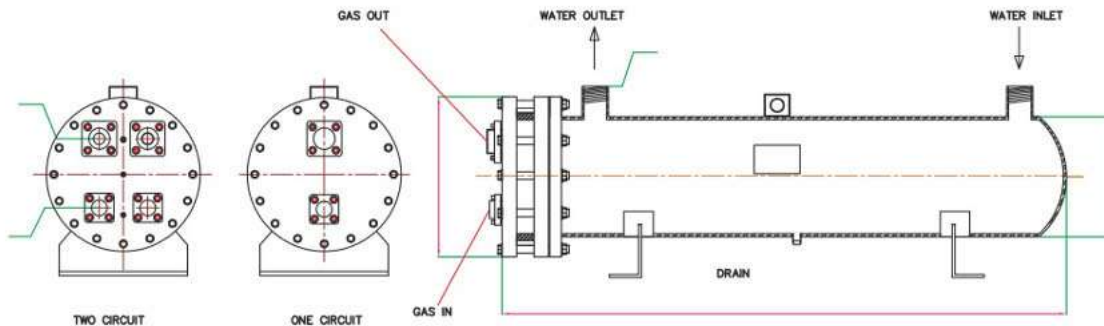
-For special design in number of Cycle, Pass, Shell diameter, other refrigerations (R134a , R22,410A) and more specifications please contact us

Shell & Tube Evaporator (R410a)

10 TO 100 KW CAPACITIES
MORE EFFICIENCY

SMALL FOOT PRINT
MORE RELIABILITY

LIGHTER WEIGHT
FLOATING HEAD



2 PASS									
MODEL	CAPACITY(kw)	CIRCUIT	GPM	B1/B2(mm)	A(mm)	D (inch)	L(inch)	S(inch)	WEIGHT(KG)
ASEI1P10	10	1	7.5	230/157	670	1 1/2	7.8	1 1/8	56
ASEI1P15	15	1	11.5	230/157	920	1 1/2	7.8	1 1/8	67
ASEI1P20	20	1	15	280/206	690	1 1/2	7.8	1 1/8	78
ASEI1P30	30	1	23	280.206	860	1 1/2	7.8	1 1/8	88
ASEI1P40	40	1	30	280.206	1070	2 1/2	7.8	1 3/8	100
ASEI1P50	50	1	38	280/206	1120	2 1/2	7.8	1 3/8	104
ASEI1P60	60	1	46	280/206	1160	2 1/2	7.8	1 3/8	106
ASEI1P70	70	1	53	280.206	1230	3	7.8	1 3/8	110
ASEI1P80	80	1	61	280.206	1370	3	7.8	1 3/8	117
ASEI1P90	90	1	68	280.206	1450	3	7.8	1 3/8	123
ASEI1P100	100	1	76	280.206	1650	3	7.8	1 3/8	133
ASEI2P30	30	2	23	280.206	980	1 1/2	7.8	1 3/8	98
ASEI2P40	40	2	30	280.206	1230	2 1/2	7.8	1 3/8	111
ASEI2P50	50	2	38	280.206	1290	2 1/2	7.8	1 3/8	114
ASEI2P60	60	2	46	280.206	1330	2 1/2	7.8	1 3/8	117
ASEI2P70	70	2	53	280.206	1390	3	7.8	1 3/8	120
ASEI2P80	80	2	61	280.206	1550	3	7.8	1 3/8	129
ASEI2P90	90	2	68	280.206	1650	3	7.8	1 3/8	133
ASEI2P100	100	2	76	280.206	1880	3	7.8	1 3/8	146

All above data and specifications are subject to change without prior notice

-Refrigerante R410 C

-Water in/out Temp 7/12°C Subcool 5/56 °C

-Evaporating Temp 3°C Super Heat 6/11 °C

-Condensing Temp 45° C Fouling Factor 0.00002 m2k/w

-For special design in number of Cycle , Pass, Shell diameter, other refrigerations (R134a, R22,410A) and more specifications please contact us

Shell & Tube Evaporator (R407C)

LOWER PRESSURE DROP IN REF-CYCLE

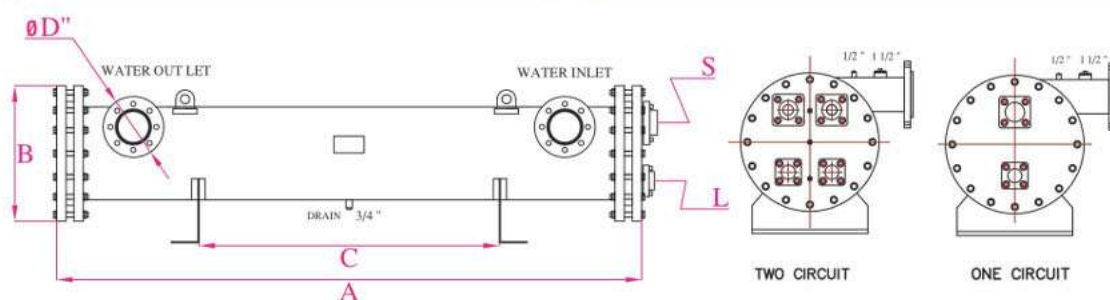
10 TO 100 KW CAPACITIES

EASY ACCESS AND CLEANING

AVAILABLE TILL 4 CYCLES

MORE RELIABILITY

AVAILABLE 1, 2, 3 & 4 PASSES



2 PASS								
MODEL	CAPACITY (kw)		CIRCUIT GPM	B (mm)	A (mm)	D (inch)	L (inch)	S (inch)
ASET1C45	45	1	34	280	2120	3	7/8	1 1/8
ASET1C71	71	1	54	350	2120	3	7/8	1 1/8
ASET2C102	102	2	77	400	2120	3	7/8	1 1/8
ASET2C121	121	2	92	400	2120	3	7/8	1 1/8
ASET2C150	150	2	114	400	2120	4	7/8	1 3/8
ASET2C177	177	2	135	430	2120	4	1 1/8	2 1/8
ASET2C204	204	2	155	485	2120	4	1 1/8	2 1/8
ASET2C218	218	2	166	400	3120	4	1 1/8	2 5/8
ASET2C254	254	2	193	430	3120	4	1 3/8	2 5/8
ASET2C289	289	2	219	490	3120	6	1 3/8	2 5/8
ASET2C311	311	2	236	490	3120	6	1 3/8	2 5/8
ASET2C359	359	2	273	490	3120	6	1 3/8	2 5/8
ASET2C398	398	2	302	570	3120	6	1 3/8	3 1/8
ASET2C477	477	2	362	570	3120	6	1 3/8	3 1/8
ASET2C508	508	2	385	570	3120	6	1 3/8	3 1/8
ASET2C578	578	2	438	600	3120	6	15/5	3 1/8
ASET2C622	622	2	472	640	3120	6	15/8	3 1/8
ASET2C718	718	2	545	640	3120	6	15/8	3 1/8
ASET2C796	796	2	604	640	4120	8	15/8	3 1/8
ASET2C954	954	2	724	640	4120	8	15/8	3 1/8
ASET2C1016	1016	2	770	690	4120	8	2 1/8	4
ASET2C1070	1070	2	812	690	4120	8	2 1/8	4
ASET2C1156	1156	2	876	690	4120	8	2 1/8	4
ASET2C1264	1264	2	958	690	4120	8	2 1/8	4

All above data and specifications are subject to change without prior notice

-Refrigerante R407C

-Water in/out Temp 7/12°C Subcool 5/56°C

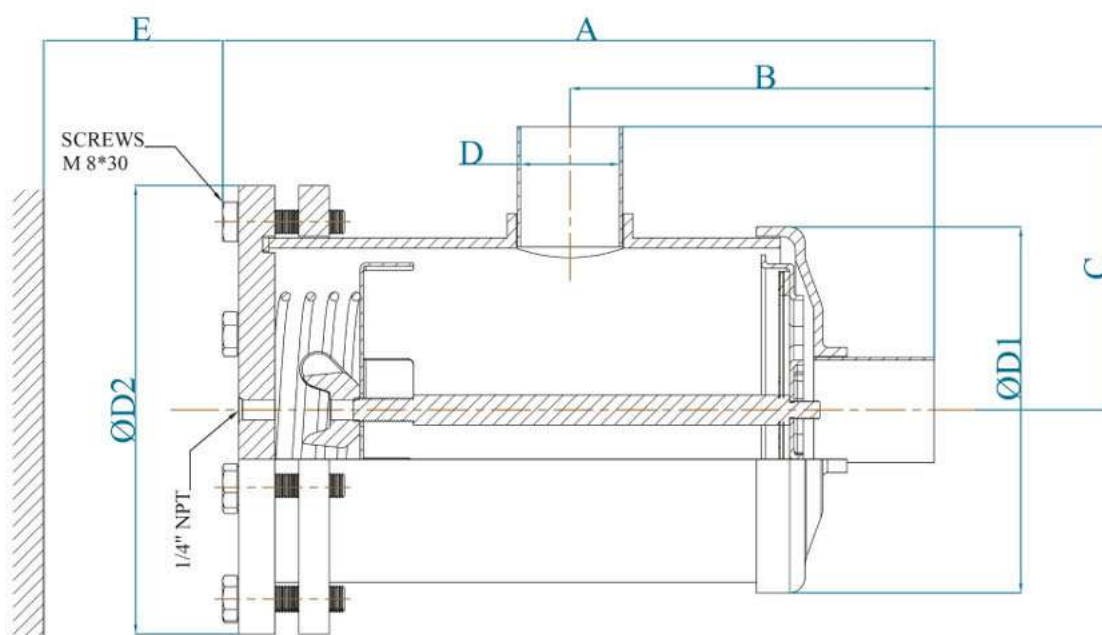
-Evaporating Temp 3°C Super Heat 6/11°C

-Condensing Temp 45°C Fouling Factor 0.00002 m2k/w

-For special design in number of Cycle, Pass, Shell diameter, other refrigerations (R134a, R22, 410A) and more specifications please contact us

Replaceable Filter dryer

REPLACEABLE SOLID CORE FILTER (SHELL)																
Type	No. of cores	normal volume (cm) (in)	filtering surface (cm)	ODS		TS (°)	PS (BAR)	Dimensions (mm)							Pieces per box	
				(IN)	(MM)			ØD1	ØD2	A	B	C	D	E		
AMC487	1	800 (48)	436	7/8	22	-40 / +80	45	122	149	234	129	165	23	180	1	
AMC489				1 1/8	29					234	129		29			
AMC4811				1 3/8	35					234	129		35.5			
AMC4813				1 5/8	42					234	129		42			
AMC967	2	1600 (96)	872	7/8	22					374	279	165	23	320		
AMC969				1 1/8	29					374	279		29			
AMC9611				1 3/8	35					374	279		35.5			
AMC9613				1 5/8	42					374	279		42			
AMC1911	3	2400 (144)	1306	1 1/8	29					514	424	165	29	320		
AMC1913				1 3/8	35					514	424		35.5			
AMC1915				1 5/8	42					514	424		42			



Technical Data

Max working pressure: 33 bar

Test pressure: 48 bar

Allowable temperature: -40~130 °C

General tolerances (mm): 3



Electromotors 17 W - 450 W



Main Characteristics:

- Electromotors (120 Series) in the range of 17-160 watt;
- Electromotors (140 Series) in the range of 180-450 watt;
- Steel casing with electrostatic painting;
- Steel (CK-45) shafts;
- Electrical steel (silicon) rotor and stator sheets;
- Copper wires with H thermal class (180 C)
- Uses low noise ZZ bearings in the electromotors;
- B-class (130 C) thermal protector on the coils;
- Based on the customer's request, electromotors can be produced as single-shaft or double-shaft
- Application area: AC (Air Condition) All of the Fan coils , duct fan coils, duct splits and ...



Low Pressure Forward Centrifugal Fan - Double Inlet 500 CFM to 60000 CFM



Main Characteristics:

- Forward Impeller and housing are made of galvanized sheet;
- Shaft is made of CK-45 steel;
- Bearings: Japanese ASAHI;
- Static and dynamic Balance;
- Speed control by bolt and pulley;
- Application area: AC (Air Condition) companies, workplace, offices, café, restaurants, meeting rooms, sport complexes, industrial kitchen, waiting room and ... ;
- All fans are statically and dynamically balanced (All fans are balanced in terms of statically and dynamically) and are tested according to (based on) AMCA Standard 210-99 (Balances are feasible in the presence of the employer).
- All forward curved fans are equipped with adjustable hook bolts to maximize rigidity and prevent deformation. hook bolts are adjusted during the balancing procedure at the factory
- All fans are equipped with a circular flange and a grid plate at the air outlet to prevent external objects entrancing to the collection when the fan is off.
- All fans can be manufactured as anti spark, anti corrosion, explosion proof, and suitable to operate at high temperatures upon request (based on the customer request)



High Pressure Backward Centrifugal Fan - Double Inlet 1000 CFM to 70000 CFM

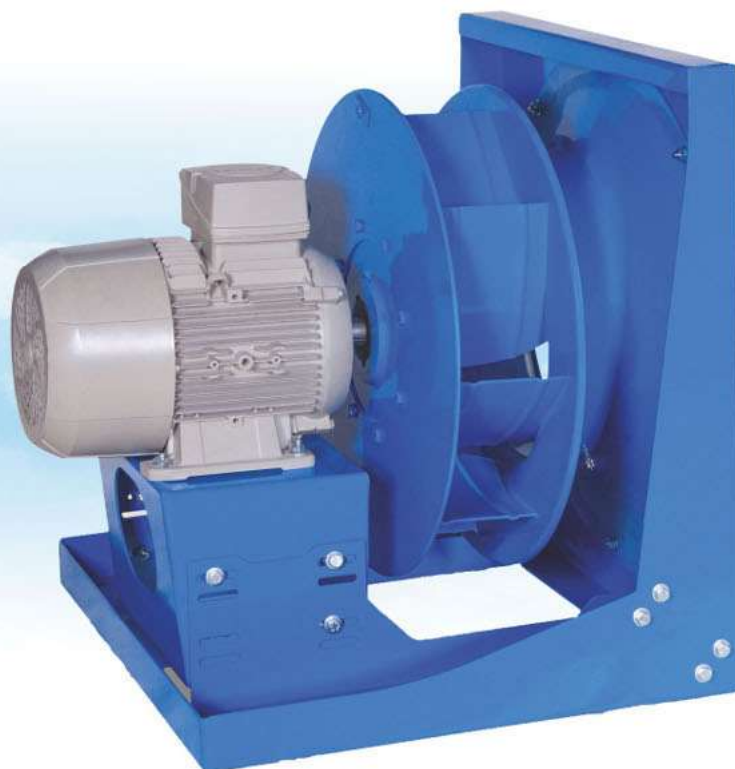


Main Characteristics:

- Housing is made of galvanized sheet;
- backward impeller is made of ST-37 steel;
- Shaft is made of CK-45 steel;
- Bearings: German INA;
- Static and dynamic balance;
- Speed control by bolt and pulley;
- Application area: AC (Air Condition) companies, workplace, offices, café, restaurants, meeting rooms, sport complexes, industrial kitchen, waiting room and ... ;
- All fans are equipped with a circular flange and a grid plate at the air outlet to prevent external objects entrancing to the collection when the fan is off.
- All fans can be manufactured as anti spark, anti corrosion, explosion proof, and suitable to operate at high temperatures upon request (based on the customer request)
- All fans are statically and dynamically balanced (All fans are balanced in terms of statically and dynamically) and are tested according to (based on) AMCA Standard 210-99 (Balances are feasible in the presence of the employer).



Plug Fan 500 CFM to 13500 CFM



Main characteristics:

- Steel St-37 Backward Impeller;
- Application area: AC companies;
- Advantages: energy saving, less space, convenient cost and easier maintenance;
- All fans are statically and dynamically balanced (All fans are balanced in terms of statically and dynamically) and are tested according to (based on) AMCA Standard 210-99 (Balances are feasible in the presence of the employer).

Low Pressure Forward Centrifugal Fan - Single Inlet 200 CFM to 12000 CFM

Main Characteristics:

- Forward Impeller and housing are made of galvanized sheet;
- Shaft is made of CK-45 steel;
- Bearings: Japanese ASAHI;
- Static and dynamic Balance;
- Speed control by bolt and pulley;
- Application area: AC (Air Condition) companies, workplace, offices, café, restaurants, meeting rooms, sport complexes, industrial kitchen, waiting room and ...;
- All fans are statically and dynamically balanced (All fans are balanced in terms of statically and dynamically) and are tested according to (based on) AMCA Standard 210-99 (Balances are feasible in the presence of the employer).
- All forward curved fans are equipped with adjustable hook bolts to maximize rigidity and prevent deformation. hook bolts are adjusted during the balancing procedure at the factory
- All fans are equipped with a circular flange and a grid plate at the air outlet to prevent external objects entrancing to the collection t when the fan is off.
- All fans can be manufactured as anti spark, anti corrosion, explosion proof, and suitable to operate at high temperatures upon request (based on the customer request)





High Pressure Backward Centrifugal Fan- Single Inlet 500 CFM to 23000 CFM



Main Characteristics:

- Housing is made of galvanized sheet;
- backward impeller is made of ST-37 steel;
- Shaft is made of CK-45 steel;
- Bearings: German INA;
- Static and dynamic balance;
- Speed control by bolt and pulley;
- Application area: AC (Air Condition) companies, workplace, offices, café, restaurants, meeting rooms, sport complexes, industrial kitchen, waiting room and ...
- All fans are equipped with a circular flange and a grid plate at the air outlet to prevent external objects entrancing to the collection when the fan is off.
- All fans can be manufactured as anti spark, anti corrosion, explosion proof, and suitable to operate at high temperatures upon request (based on the customer request)
- All fans are statically and dynamically balanced (All fans are balanced in terms of statically and dynamically) and are tested according to (based on) AMCA Standard 210-99 (Balances are feasible in the presence of the employer).



AXIAL FANS



Main Characteristics:

- Steel St-37 Casing;
- Die Cast Aluminum blades;
- AC Type Motor;
- Products High efficiency
- Unique audio function (performance)
- Low noise is generated due to electromotors special design
- Modern design
- Blades and motors are based on modern design and motors have very suitable IP
- Convenient for environment temperatures from -30 to 65 C
- The design is so that Fan can operate in the environment temperatures ranging -30 C -65 C well. Bearings have 40000h lifetime under normal conditions, which is dependent on the environment temperature.
- Convenient for residential, commercial and industrial usage
- Facile (easy) installation, repair and maintenance
- Custom design and changes at the request of the employer (providing the employer request)



The Countries to where the products of Tahvie Company have been exported



TAHVIEH

AIR CONDITIONING SYSTEMS

No.1, Kooh_e_Noor St.,
Shahid Motahhari Ave. Tehran IRAN
Tel: (+98) 2141827
Fax: (+98) 2188543584
Zip Code: 1587633111
E-mail: export@tahviah.com
www.tahviah.com



www.tahviah.com